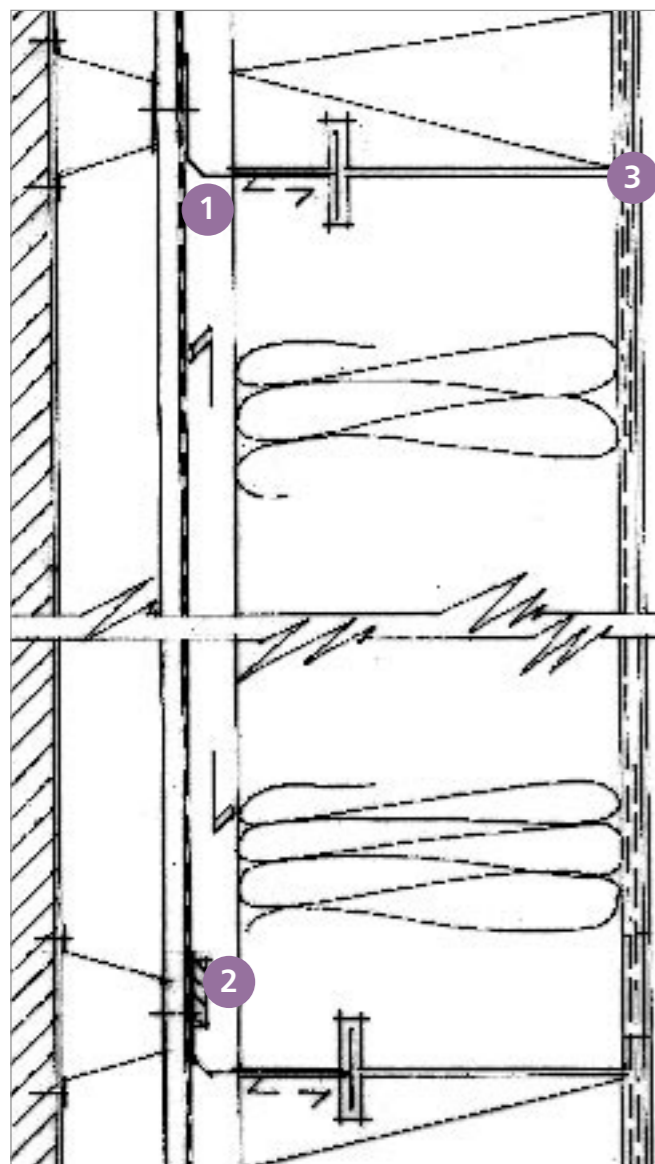


THE FIRE BREAK

Breather membrane to face of cement particle board

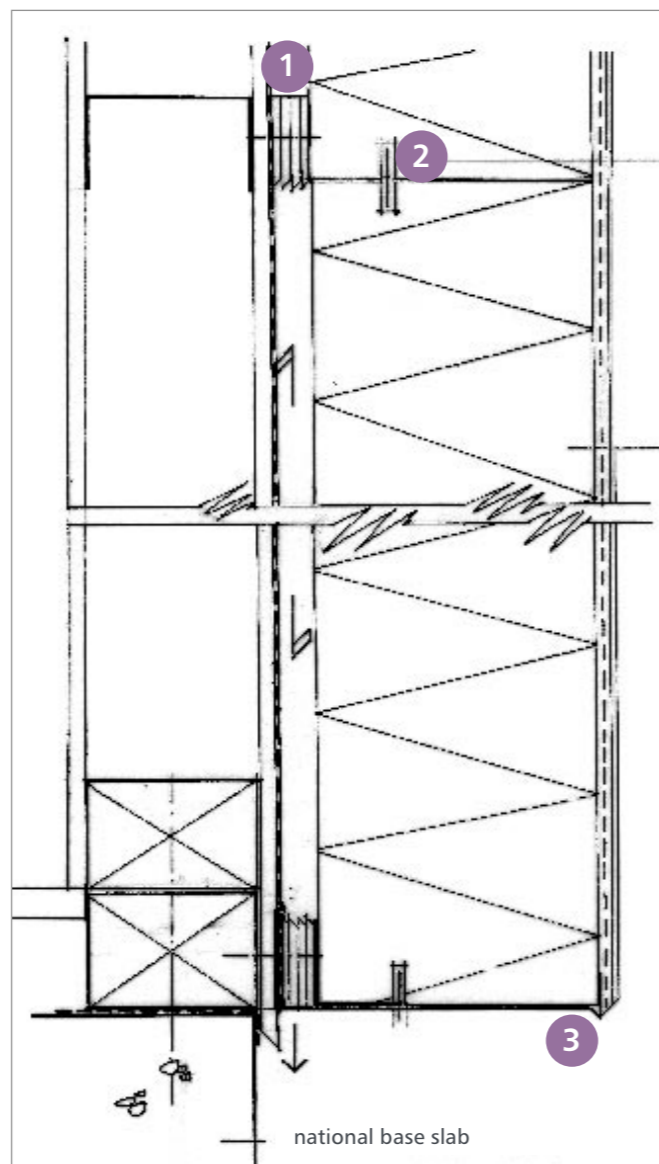


Continuous mineral fibre fire break section 500mm deep (co-ordinating 500mm x 500mm insulating blocks) from second floor positions. Mineral fibre blocks to be pre-cut for mounting / locating groove

1. Adjustable stainless steel horizontal mounting rails for full extent of mineral string course. Profiles secured through cement particle board to aluminium top hat section.
2. Intumescent strip secured to face plate of horizontal rail
3. Additional 300mm wide mesh layer at junction with main insulant.

THE BASE RAIL

Breather membrane to face of cement particle board over-lapped into base rail



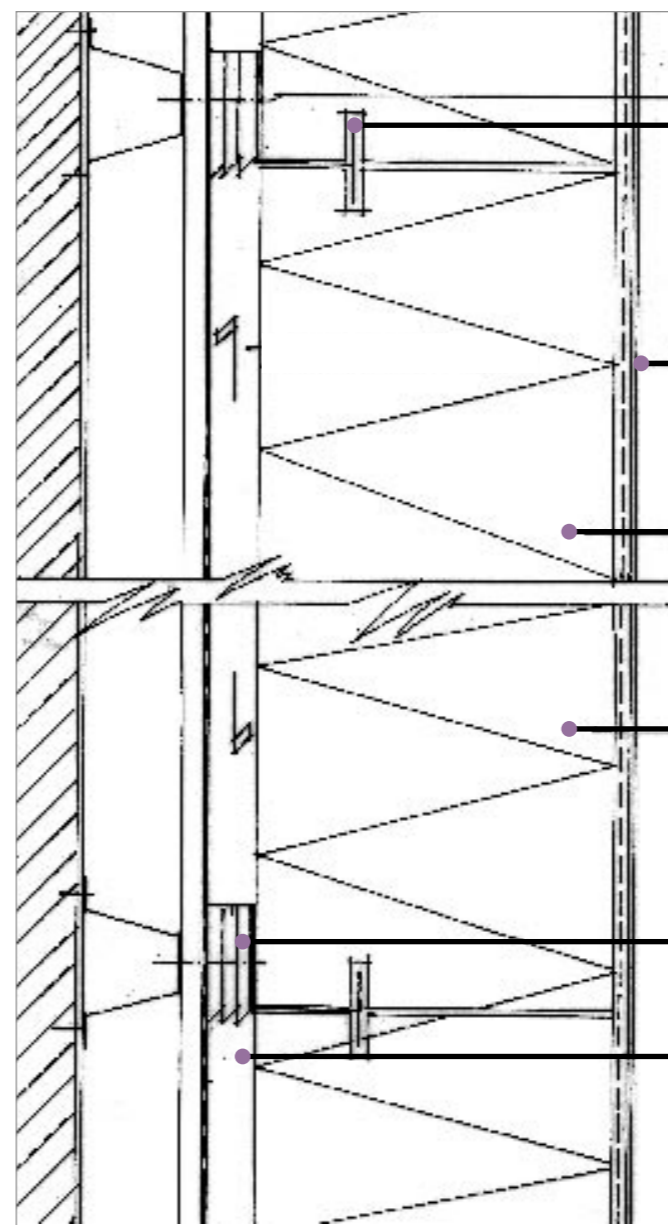
500mm x 500mm expanded polystyrene insulation blocks with pre cut locating groove secured within horizontal rail systems and 'block bonded'. All polystyrene corners and edges to be planed smooth and all joints filled prior to base coat render. Horizontal track seated within aluminium base profile.

1. Rigid plastic shims.
2. PVCu horizontal track and co-ordinating vertical spline sections secured through rigid plastic shims to cement particle board and steel or timber structured profiles
3. Rigid aluminium bellcast base trim section with vented base plate allowing for drained cavity.



STRIKOTHERM: THE MAIN RAIL

Breather membrane to face of cement particle board



PVCu horizontal track and co-ordinating vertical spline sections secured through rigid plastic shims to the top hat profile sections

Selected silicone based render finish over liquid primer over polymerised basecoat render encapsulating a simple or multi-stranded fibre reinforcing mesh

Expanded polystyrene insulant

500mm x 500mm EPS insulation sections with pre cut locating groove secured within horizontal rail system and 'block bonded'.

Rigid plastic shims

Clear cavity minimum 15mm

EXTERNAL WALL INSULATION

STRIKOTHERM RAIL SYSTEM